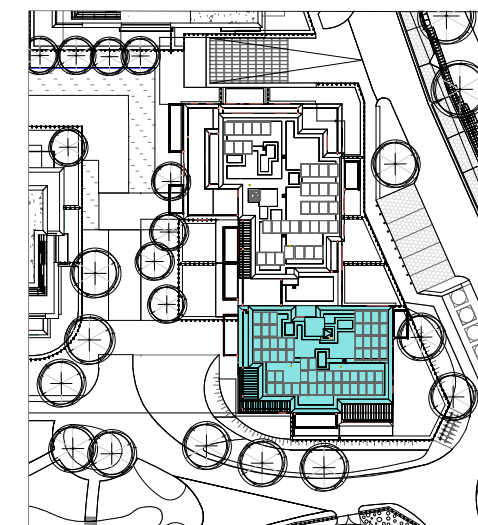
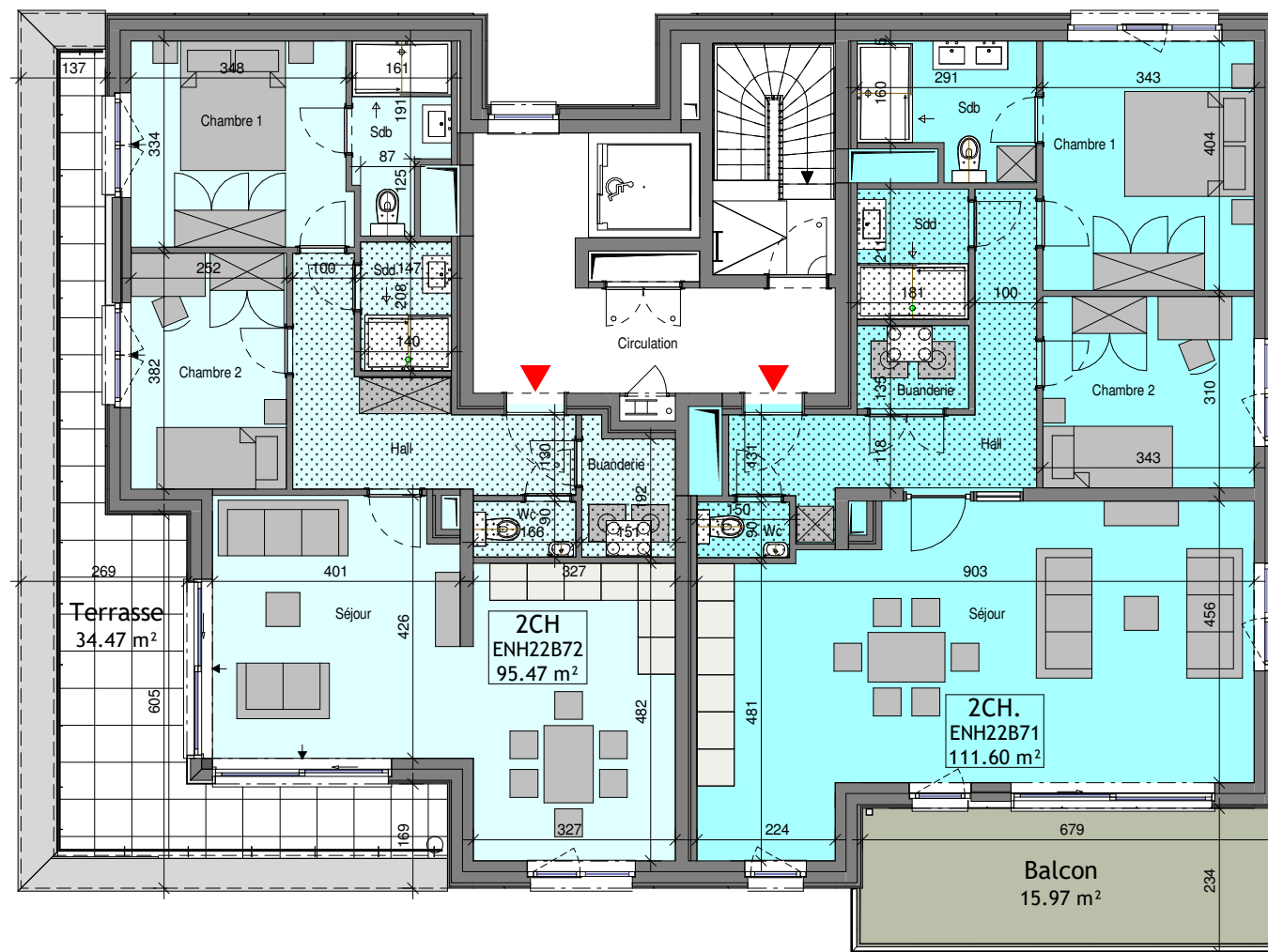
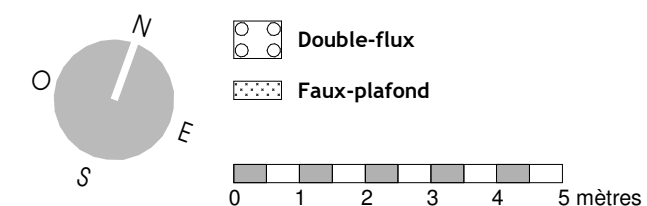


Unité	Nbre CH.	Surface (+/-m2)
ENH22B71	2CH.	111.60 m ²
	Balcon	15.97 m ²
ENH22B72	2CH	95.47 m ²
	Terrasse	34.47 m ²

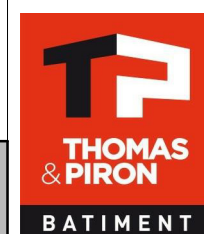


LEGENDE



Stade COM
06/07/23
Transmis

MAITRE DE L'OUVRAGE :
Thomas & Piron Bâtiment s.a.
5, Rue Fort d'Andoy - 5100 Wierde



Jambes - Parc d'Enhaive
BAT 2

INDICE

ECHELLE
1/115

FEUILLE
18 / 18

Bloc B - R+7

PLAN N°
ENH-2-AR-COM-170-B